

NOTES FROM THE PRESIDENT

It has been a pleasure to serve the members of KACA as president this year, and learning how this exciting organization works. That is why I want to encourage you to participate in the upcoming 2011 Emporia Conference on November 4th and 5th. The conference is packed with back-to-back workshops that are designed to motivate, build camaraderie with other artists and give new excitement for your own work. As fellow artists, you know the importance of the charge you get from being with other artists in a creative environment. It's all about rejuvenating ourselves as artists and interacting...

...Continued on page 11

Inside This Issue...

- Conference/Wichita Review..... 1
- Schedule of Events..... 2
- Registration..... 3
- Conference Speaker..... 4
- Workshop Artist Profiles 5-10
- KACA Member News..... 11, 12
- Wichita continued..... 13
- Supplies to Bring..... 14

EMPORIA CONFERENCE ISSUE

Welcome to the Fall 2011 conference preview edition of the KACA newsletter. This issue will serve as your go-to guide for the Emporia conference on November 4th-5th. Roberta Eichenberg and the Emporia State art department have been working diligently to create quality exhibits and to offer a wide range of workshops. You will discover the fruits of their labor inside the pages of this newsletter: a full schedule and the registration form for the conference are included along with details of the conference events. You will also notice, as you're reading, that KACA needs your help. Whether you bring a piece to the auction, attend a workshop, or even volunteer on the Executive Board, your active participation is the lifeblood of KACA. You are truly the heart of this organization, and we hope to celebrate our relevant cause of perpetuating creativity in Kansas with you and other artist friends in November.

WICHITA NATIONAL HOSTS THE BEST OF KANSAS CRAFT by Linda Gebert

The Wichita National All Media Craft Exhibition 2011 is a juried biennial exhibition of American Crafts founded in 1946. In fact, it was the first juried exhibition in the country devoted to fine craft, 3-D work, and as such drew work from all the big names in the country in ceramics, jewelry, enameling, fibers, etc. Today there is competition, as there are numerous juried craft shows. However, the breadth of the country was still represented in this year's show, as selected by juror Chris Staley. I will try to focus on the Kansas artists in the show mainly.

Staley, a nationally recognized ceramist, was naturally drawn to the clay works, and there was indeed a wide variety of styles, some cutting-edge, some lovely examples of the traditional. Delores Fortuna of Galena, IL, showed two of her ceramic-coated wire structures, representing...



...Continued on page 13



Kansas Artist Craftsmen Association and Emporia State University Present:

The 2011 KACA Conference

**KACA National Juried Exhibition
October 17 to November 18, 2011
Norman R. Eppink Gallery**

**KACA 2011 Members Exhibition
October 25 to November 5, 2011
Emporia Arts Council**

Friday, November 4th

8:00 to 9:00

Conference Registration:

Bruder Theater Lobby, King Hall

Silent Auction drop off:

Eppink Gallery office King Hall Viewing Art Ed Room
#110 King Hall

9:00 to 11:30

**Deborah Horrell, "Pate de Verre" Glass
Casting Method Demonstration**

Art Annex – 20 participants

**9:00 to 11:30 Patrick Martin, "Hot Glass Sculpting"
Demonstration**

Hot Shop Art Annex – 15 participants

**9:00 to 11:30 Dan Kirchhefer, "A Book of Hours"
Bookmaking Workshop**

Printmaking Room #002 King Hall - 15 participants, Fee \$5

12:00 to 1:00 Lunch on your own

**1:00 to 2:00 Deborah Horrell, Guest Artist Lecture Roosevelt
Hall Theater, Everyone invited**

**2:00 to 5:00 Patrick Martin, "Introduction to Hot Glass
Sculpting" Workshop**

Art Annex – 9 participants, Fee \$20

**2:00 to 5:00 Dan Kirchhefer, "A Book of Hours" Bookmaking
Workshop**

Printmaking Room #002, King Hall, - 15 participants, Fee \$5

5:00 to 7:00 Opening Reception, KACA National Exhibition
Opening at Eppink Art Gallery ESU

Silent auction viewing

Art Education Room #110 King Hall

5:00 to 7:00 Guerilla T-Shirt Printing Demonstration
Printmaking room, #002 King Hall

**6:30 – 8:00 Opening Reception KACA Members Exhibition,
Emporia Arts Council**

Potluck dinner + libations

Saturday, November 5th

8:00 to 9:00

Conference Registration

King Hall Bruder Theater Lobby

Silent Auction drop off

9:00 to 11:30

James Ehlers, "Engraving Glory" Workshop

Metals/Engraving room #012

King Hall - 15 participants, Fee \$10

9:00 to 11:30

Patrick Martin, "Hot Glass Casting" Demonstration

Hot Shop Art Annex - 20 participants

9:00 to 11:50

Larry Schwarm, "Photoshop for the Photographer" Workshop

Computer Lab Room # 007 King Hall -12 participants, Fee \$10

10:00 to 4:00 Guerilla T-Shirt Printing Assisted Workshop

Printmaking room, #002 King Hall, Fee \$5

12:00 to 1:00

**Lunch – KACA Business Meeting ESU Memorial Union Kanza
Room**

**1:00 – 2:00 Keynote address, Larry Schwarm, ESU Memorial Union
Kanza Room**

Silent Auction MU Kanza room closes after keynote

2:00 – 5:00 Patrick Martin, "Hot Glass Sand-Casting" Workshop

Hot Shop Art Annex -15 participants, Fee \$20

2:00 – 5:00 James Ehlers, "Engraving Glory" Workshop

Metals/Engraving Room, #012 King Hall - 5 participants, Fee \$10

Pick work up from member's exhibition, Emporia Arts Council.

Conference Parking

When you arrive at ESU to park on campus you may purchase a \$2 permit from Conference and Scheduling. The Conference and Scheduling office is located on Main floor of the Memorial Union entering from the East entrance – x Ph. 341-5443. \$2.00 Parking permits for only Grey and Purple parking lots. You will need the parking permits for Friday (Nov. 4th) – Parking is FREE on Saturday!

Conference Lodging

Fairfield Inn
2930 Eaglecrest Dr.
620-342-4445

- **Reservations for: November 3rd, 4th and 5**
- **All rooms must be reserved under KACA and must be reserved before midnight, October 10th to get the discounted rate.**
- **The rate is \$79 plus tax each night.**
- **ESU Volleyball game will be going also on all weekend, so place your reservations as soon as possible.**

You must use a credit card to a reserve room.

Amenities include:

- Continental Breakfast
- Indoor Swimming Pool
- Nearby restaurant and bars
- Wireless Networks

Students interested in "Couch Surfing" with a student at ESU, please e-mail Roberta Eichenberg at reichenb@emporia.edu and will try to find you a spot on someone's sofa or floor.



REGISTRATION

For the basic conference registration price, you are able to attend Deborah Horrell's lecture, Larry Schwarm's key note address, both exhibition receptions, as well as the Saturday KACA welcome, business meetings, and the KACA silent Art Auction.

To reserve a spot and participate in the hands-on workshops you will need to pay a materials fee for supplies. As space is limited in each studio, preference will be given to those who preregister for the demonstrations, on a first come, first serve basis. KACA members who are not actively partaking in the workshops are welcome to observe, but should be conscientious of the needs (space and otherwise) of the workshop presenters and participants.

Our deadline for ordering meals is October 22nd, if you do not pre-register, we are sorry, but we cannot sell meal tickets at the door. If you do not pre-register please plan to eat in the community or on campus at the new Student Union.

Costs - Membership

- _____ \$0 If you entered the 2010 exhibition competition, you paid your membership, thank you!
- _____ \$30 Single Membership
- _____ \$35 Family Membership
- _____ \$25 Student Membership

Conference Fees

- _____ \$65 Single Regular Member, includes Saturday continental breakfast + noon meal if pre-registered by 10-22-2011. Same price after 10-22 includes no meals.
- _____ \$65 High School Teachers, no membership required. Price includes Saturday continental breakfast + noon meal if pre-registered by 10-22-2011. Same price after 10-22 includes no meals.
- _____ \$80 Single Non-Member, includes Saturday continental breakfast + noon meal if pre-registered by 10-22-2011. Same price after 10-22 includes no meals.
- _____ \$25 College Student Member, includes Saturday continental breakfast + noon meal if pre-registered by 10-22-2011. Same price after 10-22 includes no meals.
- _____ \$25 High School Student, includes Saturday continental breakfast + noon meal if pre-registered by 10-22-2011. Same price after 10-22 includes no meals.
- _____ \$40 College Student Non-Member, includes Saturday continental breakfast + noon meal if pre-registered by 10-22-2011. Same price after 10-22 includes no meals.
- _____ \$25 High School Student, includes Saturday continental breakfast + noon meal if pre-registered by 10-22-2011. Same price after 10-22 includes no meals.
- _____ \$40 College Student Non-Member, includes Saturday continental breakfast + noon meal if pre-registered by 10-22-2011. Same price after 10-22 includes no meals.
- _____ \$25 Honorary Members and Conference Workers, fee pays for meals. Same price after 10-22 but includes no meals.
- _____ Donation to KACA

_____ **Total Contribution to KACA and the Conference**

Materials Fee for Hands-On Workshop

- Dan Kirchhefer, "A Book of Hours" Bookmaking Workshop, \$5
- Patrick Martin, "Introduction to Hot Glass Sculpting" Workshop \$20
- Guerilla T-Shirt printing Event - \$5
- James Ehlers, "Engraving Glory" Workshop \$10
- Larry Schwarm, "Photoshop for the Photographer" Workshop \$10
- Patrick Martin, "Hot Glass Sand-Casting" Workshop \$20

Friday November 4th

\$ _____ Demonstration Session 1 (9:00 – 11:30) List you demonstrator and materials fee

\$ _____ Demonstration Session 2 (2:00 – 5:00) List you demonstrator and materials fee

Saturday November 5th

\$ _____ Demonstration Session 1 (9:00 – 11:30) List you demonstrator and materials fee

\$ _____ Demonstration Session 2 (2:00 – 5:00) List you demonstrator and materials fee

\$ _____ \$5 fee for t-shirt printing events Friday and Saturday

_____ **CHECK TOTAL**

To Pre-register, make your check payable to KACA and send it and this form by October 22, 2011 to:

**Ronald Michael
KACA Treasurer
715 N. 1st St.
Lindsborg, KS 67456**

Please pre-register to secure your spot and the chance to participate in these unique and exciting workshops, and to ensure that you are on the list for the meals. You are more than welcome to register on the day of the conference and observe the demonstrations, as seating allows.

Name _____

Address _____

City St Zip _____

Email address _____
(Email is KACA's avenue of information sharing. If you would like to receive emails from KACA, please provide your Email contact above.)



Larry Schwarm to Present Keynote Address at 2011 Conference



KACA is proud to host photographer Larry Schwarm as keynote speaker, and workshop presenter for the upcoming November conference. Larry Schwarm, a Professor of Art at Emporia State University, has photographed the prairie fires of his native Kansas, setting out to capture every essence of the burning landscape. His photographs have been included in various publications and are in the permanent collections of the Smithsonian American Art Museum, Philadelphia Museum of Art, San Francisco Museum of Modern Art, Nelson-Atkins Museum of Art, Kansas City, and others.

In the past year, Larry's photographs have been exhibited at the George Caleb Bingham Gallery in Columbia, Missouri, the Philadelphia Museum of Art, the Ackland Museum of Art, Chapel Hill, North Carolina, the Wichita Art Museum, and the Bemis Art Center in Omaha.

He has published a monograph, *On Fire*, and his photographs have appeared in dozens of books and magazines. His work is in the permanent collections of Duke University, Library of Congress, Washington, DC, Los Angeles Museum of Art, Milwaukee Museum of Art, Minneapolis Institute of the Arts, San

Francisco Museum of Modern Art, Nelson-Atkins Museum of Art, Kansas City, and many more.

KACA Workshop: *Photoshop for Photographers*

Saturday, November 5th: 9:00 – 11:50

Presenter: Larry Schwarm

Computer Lab Room # 007 King Hall

12 participants, Fee \$10

In his Photoshop workshop, Larry will share some of his expertise in techniques of color-correction, editing, and some of the many image alterations and enhancements that the software offers. Included will be a section on preparing photographs of work for competitions and publications.

The workshop is limited to twelve participants (the number of computers in the room). Larry will demonstrate and you will follow along and using the same tools and techniques at your computer station. Stock images will be furnished for the demonstration. There will be time at the end of the session to work on a project and you may use your own photos if you choose.



KACA, FACEBOOK, AND EMAIL

KACA is exclusively using digital media to communicate with our members. If you are not receiving KACA emails but would like to, please add your email address to your conference registration form. You may also join the KACA Facebook group page to communicate with members regularly.



CONFERENCE WORKSHOPS

KACA Demonstration: *Pate de verre*

Friday, November 4th: 9:00 – 11:30

Artist Talk: 1:00-2:00

Presenter: Deborah Horrell

Art Annex – 20 participants

Deborah Horrell will demonstrate the investment casting method called Pate de verre (paste of glass). Deborah will explain how she achieves her complicated glass forms with this meticulous technique. She will have examples of the process and take participants through this unique method of casting her glass sculptures.



The process of Pate de verre involves making a paste using ground up glass and a binder that is then applied to the surface of a plaster silica mold and fired in a kiln up to 1500 degrees Fahrenheit. The big advantage to pate de verre is that it allows for the precise placement of particular glass colors in the mold. Other ways of filling the investment mold often result in some shifting of glass from where it has been placed prior to firing, but the pate de verre process helps to control this shifting.



About Deborah Horrell:

Deborah Horrell received her MFA from the University of Washington in 1979. After working as a ceramist for many years, Horrell participated in the Pilchuck Glass School's visiting artist program in 1994. A residency at the Bullseye Factory followed in 1996

permanently changing the trajectory of her career. The artist has shown her work, both ceramic and glass, in museums and galleries throughout the country.

The vessel is a primary form and figure. Compositions refer to the still life tradition as much as to surrealism. Giorgio Morandi's manipulations of form in space influence her awareness as does DeChirico's disparate inhabitants within skewed landscapes.

Human interaction informs posture and position in her tableaux. The structure of family - couples, siblings, being part and apart, determines placement and the consequent dialogue. Figures write their own stories as their character evolves.

Glass plays a significant role in the life of these entities. The making of the vessels with glass in the pate de verre and cast methods promote an exploration of pointillist color, transmission of light and transformation of particulates.





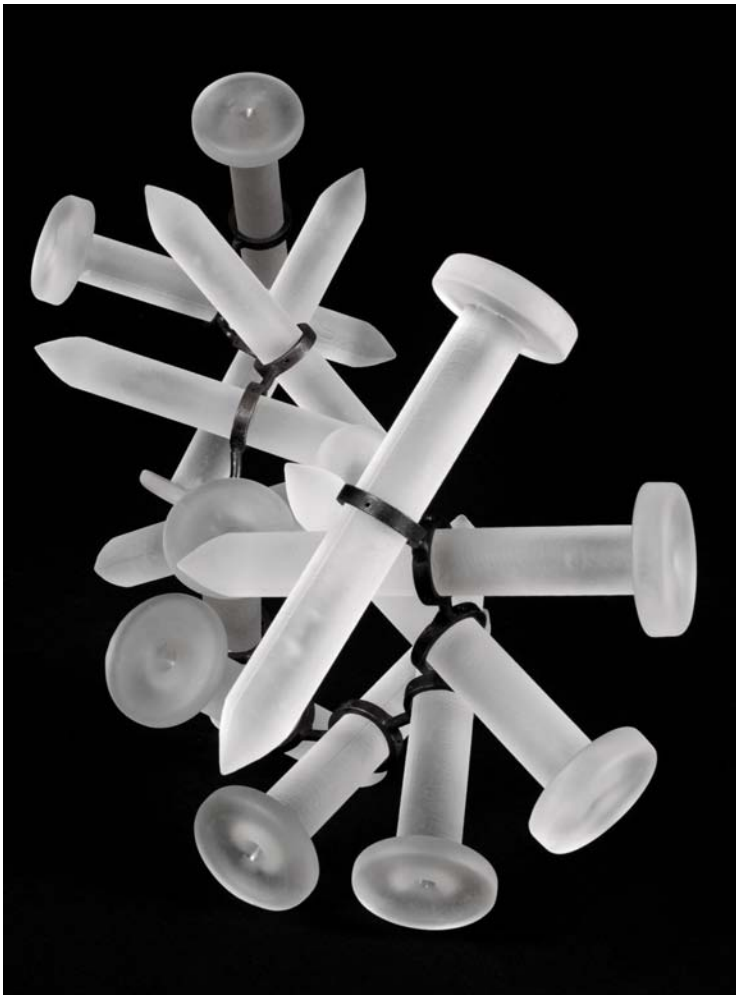
KACA Demonstration: *Hot Glass Sculpting*

Friday, November 4th: 9:00 – 11:30
Presenter: Patrick Martin
Hot Shop, Art Annex – 15 participants

Creating sculptural forms from molten glass will be explored through a variety of hot glass-sculpting processes. Working directly from the furnace one can achieve immediate yet detailed sculpted objects. Teamwork, color application, and torch work will be included in this demonstration.

Students need to bring or provide for the workshop:

Long Pants (cotton)
Long sleeve shirt (cotton)
Leather shoes
Sunglasses



KACA Workshop: *Introduction to Hot Glass Sculpting*

Friday, November 4th: 2:00 - 5:00
Presenter: Patrick Martin
Hot Shop, Art Annex – 9 participants, Fee \$20

Participants will acquire the first hand experience of what it is like to work in a hot glass studio and the opportunity to learn a few basic hot glass-sculpting techniques. ESU Glass students will assist the participants in achieving a small sculpture made from molten glass.

Students need to bring or provide for the workshop:

Long Pants (cotton)
Long sleeve shirt (cotton)
Leather shoes
Sunglasses



KACA Demonstration: *Hot Glass Casting Demonstration*

Saturday, November 5th: 9:00 – 11:30
Presenter: Patrick Martin
Hot Shop, Art Annex – 15 participants

This demonstration will focus on the process of sand-casting, which involves ladling molten glass from the furnace into open face sand molds. Basic mold preparation, color application, and hot casting techniques will be examined. A hot glass manipulation piece will also be included in this demonstration.

Students need to bring or provide for the workshop:
Long pants (cotton), long sleeve shirt (cotton), leather shoes, sunglasses



KACA Workshop: *Hot Glass Sand-Casting*

Saturday, November 5th: 2:00 - 5:00
Presenter: Patrick Martin
Hot Shop, Art Annex - 10 participants,
Fee \$20

Participants will be introduced to basic sand-casting techniques including mold preparation, teamwork, and annealing. This workshop will begin with instruction on sand mold preparation, templates, and sand mold

impressions. All participants will create a sand mold and have a form cast in glass. Size limitations for the forms brought for this workshop: L-7" x W-4.5" x D-4"

Students need to bring or provide the following for this workshop:
Long pants (cotton), long sleeve shirt (cotton), leather shoes, sunglasses, small plastic toys, shallow or flat wood or hard foam templates to make impressions

About Patrick Martin:

Patrick Martin infuses socio-political themes in his mixed media sculptures to create a discourse between form, space, and content. He has received numerous awards and grants while maintaining a national exhibition record. Martin earned his BA from Centre College in Danville, KY and his MFA from Tulane University in New Orleans, LA. He has taught at the Pilchuck Glass School, Unitec Institute of Technology in Auckland, New Zealand, and Tulane University in New Orleans, LA. He is currently an Associate Professor of Art and teaches glass forming at Emporia State University in Emporia, KS.



KACA Workshop: *A Book of Hours: Book Making Workshop*

Friday, November 4th: 9:00 – 11:30 and repeated at 2:00 – 5:00 pm
Presenter: Dan Kirchhefer
Printmaking Room #002 King Hall - 15 participants, Fee \$5

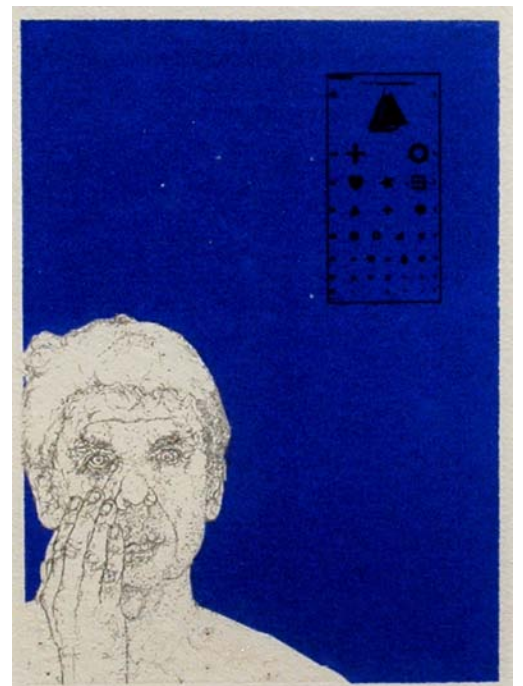
In this workshop participants will learn how to make a beautiful delicate book from drawings, sketches and prints selected from their own collection. Bring a number of prints, drawings and sketches approximately 10" x 5" in size to serve as the matrix for transfer prints. These prints will make up the pages of our books. The book will be made with waxed pages, transfer prints, chine colle and sewing.

Required materials:
Old new and or found
Sketches Drawings Prints
Exacto Knife
Fine tip markers
Fine sewing needle



About Dan Kirchhefer

Dan R. Kirchhefer received his B.F.A. from the University of Nebraska at Lincoln, his M.A. from the University of Cincinnati, and his M.F.A. in Printmaking from the University of Kansas. He has been in 200 international, national, and regional juried shows. Dan has received numerous awards and has work in several public collections. Represented by: Charles M. Young, Portland, CT, 23 Sandy Gallery, Portland, Oregon, Strecker-Nelson Gallery, Manhattan, Kansas. Currently Dan is a Professor of Art at Emporia State University and teaches Printmaking and drawing.





KACA Demonstration & Workshop: *Linoleum Print and Guerilla T-Shirt Printing Event*

Demonstration: Friday, November 4, 5:00 – 7:00

Assisted work time: Saturday, November 5, 10:00 - 4:00

Presenters: Eric Conrad James Ehlers

Printmaking room # 002 King Hall

Open to All, Fee \$5

Emporia State University Department of Art Professors Eric Conrad and James Ehlers will conduct a hands-on linoleum carving and t-shirt printing demonstration. During a demonstration on Friday evening from 5-7 PM, Eric and James will show how to carve the supplied linoleum blocks and print onto t-shirts. Supplied materials include ink, lino cutters, and pieces of linoleum that will range in size from 3" x 3" to 4" x 6", so you can plan your images accordingly. On Saturday from 10 AM-4 PM, student assistants will be on hand to help you carve your imagery into the linoleum and print onto your own t-shirts. Participants may also be able to mix and match their own blocks with the blocks of others to create unique, custom/collaborative t-shirt designs. Basic carving techniques, tools, and process will be covered. Shirts will be printed in black ink.

List of materials that will be supplied:

- Ink
- Linoleum blocks
- Cutting tools

List of materials that attendees should bring with them:

- Light colored t-shirts or similar apparel with no zippers or buttons
- Simple black and white drawing
- Smock/apron or wear clothes that can get messy
- Pencils and/or Sharpie markers

About Eric Conrad

Eric Conrad is an Associate Professor of Art and the Foundation Studies Coordinator at Emporia State University in Emporia KS. Eric completed a BA in Mathematics and Fine Art from Kalamazoo College in Michigan and did his graduate study at the School of the Art Institute of Chicago and the Rhode Island school of Design where he received an MFA in Painting / Printmaking in 2000. His interest in traditional figurative painting, dramatic settings, and psychologically charged spaces manifest themselves in sculptures, drawings and mixed media installation that deal with power and relationships tension and sensuality, intimacy and aloneness, violence and exuberance. He has exhibited his work in regionally, nationally and internationally including venues in New York, Colorado, Massachusetts, Florida, Illinois, Iowa, California, Hungary and New Zealand. The recipient of several grants, awards and fellowships, he has received a Pollock-Krasner grant, and has been an artist in residence at the Fine Arts Work Center in Provincetown, Massachusetts, The Bemis center for Contemporary Arts in Omaha, Nebraska and Anderson Ranch in Snowmass, Colorado.



...James Ehlers biography on page 10



KACA Workshop: *Engraving Glory*

Saturday, November 5th: 9:00 – 11:30 and 2:00 – 5:00 pm

Presenter: James Ehlers

Printmaking Room #002 King Hall - 15 participants, Fee \$10



In the Engraving Glory workshop Mr. Ehlers will cover sharpening tools, transferring imagery, using a vise and pneumatic engraving methods. The Glendo Corporation of Emporia has equipped the ESU metals and printmaking studios with a number of engraving stations that feature their specialized GRS pneumatic engraving equipment, including the rotating vise and sharpening hone. James will also demonstrate traditional engraving techniques using the burin. 2" x 2" steel plates and gravers will be provided for your use during the workshop.

<http://www.grstools.com/> Visit the GRS website to see and read more about this pioneering engraving equipment.

Required materials: Pencils, sharpies, small sketches

About James Ehlers:

James Ehlers has been the Engraving Arts Professor at Emporia State University since 2007. It is the first and only program in the world to offer a BFA in engraving arts. The program focuses on metal engraving, as well as engraving wood, glass, and many non-traditional materials.



Ehlers received a BA from McNeese State University in 2000, MA from Bradley University 2002 and an MFA from the University of Florida in 2005. In the last three years, he has given sixteen engraving workshops at different Universities including: the University of West England – Bower Ashton, the University of Tennessee – Knoxville and the University of North Texas. He remains active in exhibiting work and has been in over a combined 100 national, international, competitive, invitational, touring and solo exhibits around the world. His work is in the collections of the University of Wisconsin-Parkside, Bradley University, The Kansas City Art Institute, Bradley University, the Engraving Museum of Douro, Alijo-Portugal, Lisa Helfrich-Jackson (Executive Producer of Television Sitcom “Every Body Loves Raymond”) and Chet Tomczyk (President and CEO of WTVP, Peoria, IL).



Member News

From Lynn Cool:

Lynn is returning to Kansas after installing “Synthesis,” her solo exhibition at Southern Illinois University Edwardsville. The show closed Thursday, September 29. An artist’s lecture was given on the 29th and a closing reception followed in the New Wagner Gallery in the Art & Design building at SIUE.

From Katrina Florell:

Katrina delivered a piece to the Workhouse Arts Center in Lorton, Virginia for the 1st Annual *Workhouse Clay National Ceramics Exhibition*; Juror Ellen Shankin. She also did a workshop at Brackers, called *Image Transfer on Clay*, with Paul Andrew Wandless in Lawrence, KS. She participated in a month long workshop at Fort Hays State University called *Clay Plus One*, with Linda Ganstrom. Katrina also traveled to Snowmass Village Colorado to Anderson Ranch and did a workshop called *Cast Concrete Sculptures*, with Ralph Scala and John Llyod for a week in June and a two week workshop in July called *Interpreting the Figure*, with Cristina Cordova.

From Chris Graber:

Chris has been involved in numerous exhibitions, including *Kansas Arts for Japan* at the Strecker-Nelson Gallery, Manhattan, KS, the *19th annual Strictly Functional Pottery*



National at the Market House Craft Center, East Petersburg, PA, and *Amalgamation* at Kemper Gallery, Kansas State University, Manhattan, KS. He was a graduate student presenter at the last NCECA conference in Tampa, Florida and served as a juror for the *James A. Fletcher Memorial Award* and *Wrap It Up*, Manhattan Arts Center, Manhattan, KS. Chris

served as a volunteer for Empty Bowls, donating bowls and organizing student involvement. He has also been published in the *Touchstone* at Kansas State University, and wrote *Thanks for Help with WMS Fine Arts Fair* for the Wamego Smoke Signal in February.

From Jarred Pfeiffer

Jarred will have a piece in the 64 Arts Nationally Juried Exhibition in Monmouth, IL and got a piece into the 7th International Biennial Ceramics Exhibition in Kapfenberg, Austria. He’s very excited for both!



KACA NEEDS YOU

KACA is in real need of devoted artists like you to serve on the Executive Board/Board of Directors. At the conference in November, the Publicity Chair position will become available. If you have experience in simple layout design and type editing, this could be a great position for you! In addition, the Student Liaison and President Elect positions will be available. Serving on the KACA board is rewarding and great for your resume! If you’re interested in helping an invaluable, Kansas arts organization thrive, please Email president Amy Kephart at clayajk@yahoo.com or let a board member know of your interest at the November conference.



Member News Continued

From Lin Stanionis:

“Penitence,” a brooch from Lin’s recent body of work utilizing cast resins, was included in the recently published book *21st Century Jewelry: The Best of the 500 Series* in hardcover. In addition, she was honored to be selected, from an international pool of entries, as one of the finalists for the Raphael Founders Prize in Jewelry and Metals from the Society of Contemporary Craft in Pittsburg, PA. In July, Lin taught a workshop at the Penland School of Crafts in North Carolina. She found the energy and community of Penland to be fabulous, and she is looking forward to returning in September for the Educators Retreat.

From Glenda Taylor:

The Art Department at Washburn University is pleased to welcome a new Catron Professor of Art to our Department, Jennifer Marsh. Jennifer comes to Washburn from a recent teaching position at the University of Alabama in Huntsville as a Visiting Assistant Professor in Sculpture. She will be covering similar courses at Washburn, as well as teaching in the design foundations program and working with community outreach for the Mulvane Art Museum and the Art Department. Her creation of and continued involvement with the International Fiber Collaborative and The Dream Rocket project will offer Kansans the opportunity to become a part of an international project to wrap a Saturn V Moon Rocket with artwork created by students, teachers, individuals, and communities from around the globe. Watch for further notices about how you can become involved in this exciting, giant project. Jennifer plans to contact many public K-12 schools in Kansas as well as work with community groups or individuals who wish to become part of the Dream Rocket. She plans to be in attendance at KACA and KAEA conferences, where you can meet her and learn more.

On a related note, the Washburn art community was very sorry to bid farewell to Stephanie Lanter, the previous Catron Professor, but are thrilled to know she will still be nearby at Emporia State University. It’s great to keep great people, artists, and friends in Kansas!

President continued (from front page)...

...like-minded people. Come see your artwork exhibited in the two art shows that will be opening on Friday night, and enjoy food and drink with fellow members. As well as the Glass Workshops and demos with Deborah Horrell going on throughout the weekend, take time out to enjoy the Guerilla T-Shirt event and take home a cool handmade T-shirt. There will also be workshops in Photoshop, Bookmaking, and Engraving. Remember to bring a piece to donate for the silent auction. Not only is the auction a blast, we will make some cash. I would like to thank Roberta Eichenberg at Emporia State for all her hard work in orchestrating this conference. We are all looking forward to meeting you and getting to spend time commiserating as artists, and having some laughs together.

**-Amy Kephart
President of KACA**

REMEMBER THE AUCTION!

You are an important part of KACA! Without your participation and contributions, we cannot host nationally recognized artists and hold exciting workshop opportunities that benefit Kansas and other Midwest artists.

WE NEED YOU.

One way that you can serve KACA is to bring a small art work to the conference to donate to our annual silent auction. The more work that we have in the auction, the more funds we can raise to filter directly back into next year’s event. In addition, remember to bring extra cash or your checkbook, as something on the auction table is bound to catch your eye!



Wichita continued (from page 1)...

the more unusual pieces. Blending ceramics and fiber, Jeani Gustafson of Ulysses, KS surprised and delighted with stoneware tiles stitched to fabric, with the image of a tree showing through in the negative space in between the tiles. It was reminiscent of the random cracks in rain-parched soil. The delicate stitchery continued into the fabric background.

A large contemporary vessel, perhaps 3-4 feet tall by John Mccluggage of Douglass, KS was not new in style, but beautiful and elegant with the subtle variety of surface texture and glazes in shades of white. Dale Allison Hartley of Emporia KS, had another large well-crafted vessel with her signature subtle surface of low fired soda. By contrast, a surprise was a subtly painted clay sculpture of a 2-foot tall pelican, rendered



realistically by Sandra Keller of Hutchinson, KS. To my way of thinking Staley must have wanted to present a retrospective of just the variety clay can achieve. Michaela Groeblacher of McPherson showed three eerily realistic ceramic female figures, most

startling, the bald and elderly Demeter. Marko Fields, formerly a Kansan, noted for his elaborately decorated and humorous pieces, showed a chipped, oil smudged, overturned tea cup with the emblem Exxon Valdez. A triumphant survivor "Prince Darwin", a lovely detailed green frog clings to the top.

The fiber in the show was technically lovely and showed hours of work, but none was what you'd see as groundbreaking. As often happens in a craft show, a juror understands his own medium and the current explorations there much better than other media. Jill Rumoshosky Warner, of Wichita had a fiber installation piece, "Picniced", a quilted landscaped backdrop progressing from the wall onto the floor, with a picnic of realistic looking fiber "BLT" sandwiches, bags of chips, etc.

Lin Stanionis, Overbrook, KS had three of her black cast urethane resin pieces, so delicate in detail and so eerie in content. "Rapture" has at its heart, what looks like a heart, or on closer inspection, a dead flattened toad. The Victorian look of elegant frame, with further decoration around the edges comprised of a small tracery of bird claws, juxtaposes the elegant and the creepy to delightful, though unsettling, effect.

Though there was very little jewelry or metal work in the show this year, a lovely necklace was my personal favorite in the category. Rob Jackson, of Athens, GA used dark, forged iron nails linked together by delicate high karat gold set with carnelians. What a beautiful contrast in his "Circolo" necklace.

Some surprising pieces were a "Day of the Dead" cast sugar skull, intricately decorated; two very large wall sculptures of manipulated undulating steel lushly airbrushed, one in subtle matte colors, and the other boldly shiny, enhanced with chrome auto parts by Wichita artist, Greg Johnson; there were two very old and traditional looking stained glass windows of angels with guns (will they go in a church that forgot to post a "no guns allowed" sign?); and the First Place winner, a so simple, so subtle and ultimately so elegant small black painted triangular and square shape representing a house, with a single, beautifully lathed egg-shaped wood tree of natural wood, with a few perfectly placed incised black lines. Contrast is always delightful and after looking at pieces with lots of color, lots of detail, it was like an oasis of perfect calm and order.



Supplies to Bring

In the last three years, the KACA conference has become more interactive. We charge a fee for each workshop to cover the cost of the materials that the demonstrating artists provide for our guests. Those costs can be found in the schedule on page 2. Participants will also be asked to bring additional materials for the workshops listed below. ***The packing list for the workshops requiring extra materials is found on this page...don't forget to bring these suggested supplies if you have them!***

A Book of Hours: Book Making Workshop
Friday, November 4th: 9:00 – 11:30 and 2:00 – 5:00

Presenter: Dan Kirchhefer

- Old, new or found sketches, drawings, and prints
- Exacto knife
- Fine tip markers
- Fine sewing needle

Hot Glass Sculpting
Friday, November 4th

Demonstration: 9:00 - 11:30

Introductory Workshop: 2:00 - 5:00

Presenter: Patrick Martin

- Long pants (cotton)
- Long sleeve shirt (cotton)
- Leather shoes
- Sunglasses

Hot Glass Casting Demonstration
Saturday November 5th: 9:00 – 11:30

Presenter: Patrick Martin

- Long pants (cotton)
- Long sleeve shirt (cotton)
- Leather shoes
- Sunglasses

Photoshop for Photographers
Saturday November 5th: 9:00 – 11:50

Presenter: Larry Schwarm

- Personal photos

Hot Glass Sand-Casting
Saturday, November 5th: 2:00 - 5:00

Presenter: Patrick Martin

- Long pants (cotton)
- Long sleeve shirt (cotton)
- Leather shoes
- Sunglasses
- Small plastic toys
- Shallow or flat wood or hard foam templates to make impressions

Engraving Glory

Saturday, November 5th: 9:00 – 11:30 & 2:00 – 5:00 pm

Presenter: James Ehlers

- Pencils, sharpies, small sketches

Linoleum Print and Guerilla T-Shirt Printing Event
Demonstration: Friday, November 4th,

5:00 – 7:00 pm,

Assisted work time: Saturday, November 5th, 10:00 AM - 4:00 PM

Presenters: Eric Conrad James Ehlers

- Light colored t-shirts or similar apparel with no zippers or buttons
- Simple black and white drawing
- Smock/apron or wear clothes that can get messy
- Pencils and/or Sharpie markers



KACA EXECUTIVE BOARD

President - Amy Kephart

President Elect -

Past President - Brian McCallum

Secretary - Jennifer Nolan

Treasurer - Ron Michael

Publicity Chair - Brianne Fulton

BOARD OF DIRECTORS

President - Amy Kephart

President Elect -

Past President - Brian McCallum

Secretary - Jennifer Nolan

Treasurer - Ron Michael

Publicity Chair - Brianne Fulton

Members at Large - Southeast: S. Portico Bowman; East: John Kudlacek; Central: Ron Michael

Program Chair '11 - Roberta Eichenberg

Student Representative - Jarred Pfeiffer, Crista Westbrook, and Katrina Florell

Archivist - Larry Peters

Advisors/Past Presidents - Glenda Taylor, Larry Peters, Linda Ganstrom, Elliott Pujol, Caroline Kahler, John Kudlacek